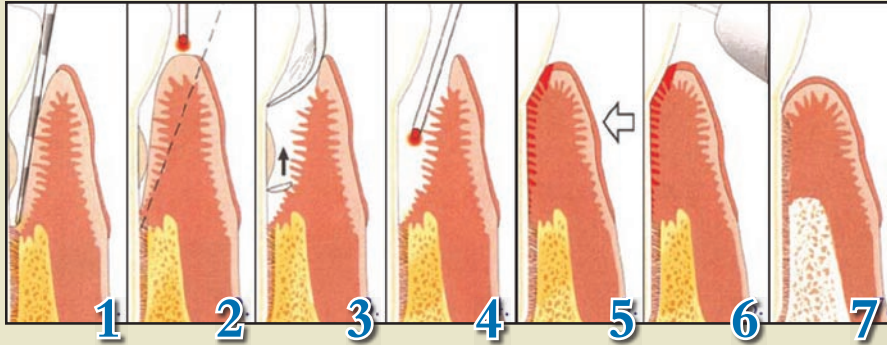
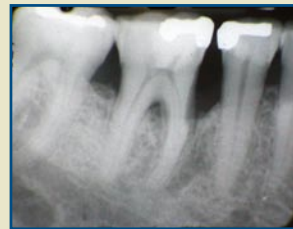


# The Gold Standard

## The LANAP Treatment



*Before Treatment*



*1-Year Post LANAP® Protocol*

*Our Doctors are among the few in the country that can perform this laser procedure!*

## Why LANAP?

### LANAP

24-hour recovery time with minimal discomfort

98% of laser treated patients remain stable after five years

Greater predictability for reattachment of gum tissue and bone regeneration

Less time in dental chair – Typically takes two 2-hour visits

Reduced risk of infection, decreased sensitivity and less bleeding

Little to no gum recession

Less invasive – no cutting, no sutures, and minimal bleeding

Treats the whole mouth, not just single site defects

### Included with LANAP (Kitchen Sink Technique)

Scaling & Root Planing with Chlorhexidine Rinse

Nightguard/Splint – Like a cast for your tooth

Splinting of Mobile Teeth

Occlusal/Bite Adjustment – To reduce bite force on mobile teeth

Anti-Inflammation Drugs – To reduce pocket inflammation

Antibiotic – To destroy bacteria

Chlorhexidine Rinse – Extra Strength Anti-bacterial Rinse

# Traditional Treatments

## Osseous Surgery



*Immediately after surgery*



*6 months post-op*



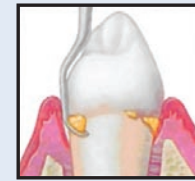
*Immediately after LANAP*



*6 months post-LANAP*

- Osseous Surgery will most likely lower the gumline, leaving more tooth exposed
- Pain, swelling, and bleeding likely following surgery
- Risk of infection
- Potential need for bone or skin grafting
- Increased sensitivity to hot and cold
- “It’s like having an infection on your finger and just cutting your finger off.”

## Scaling & Root Planing (Band-Aid)



Scaling



Planing

- Local anesthetic often used to numb gums and roots of teeth
- A special, ultrasonic device is used to remove heavy deposits as well as hand instruments used to chip away plaque and calculus
- Plaque and tartar are removed using scalers and cures (scaling)
- Root planing removes remaining calculus and smooths irregular areas of the root surface
- Helps keep the area free of bacteria and may help ligaments to reattach, reducing pocket depth
- Patient will be sore 2-3 days after treatment and possible sensitivity to hot and cold temperatures
- Usually multiple visits are required